



Sheraton Maui Resort & Spa
2605 Kā'anapali Parkway
Lāhainā, Maui, HI 96761-1991
T 808 661 0031
F 808 661 0458
sheraton-maui.com



facebook.com/sheratonmaui
twitter.com/sheratonmaui

Reservations 1.866.716.8109
Starwood Preferred Guest 1.888.625.4988



- Resort View
- Partial Ocean View
- Ocean View
- Ocean Front
- Deluxe Ocean View
- Deluxe Ocean Front
- Ohana/Family Suites
- Junior Suites

Suites

Guest Rooms & Suites

- 508 rooms and suites, 83% with ocean views, including one Presidential Suite, 11 Luxury Suites, 20 'Ohana (Family) Suites and 12 Junior Suites
- All rooms have furnished balconies, Sheraton Sweet Sleeper® Bed, air conditioning, flat screen cable TV with in-room movies, in-room safe, coffee maker and refrigerator

Floor Plans

- Resort/Partial Ocean/Ocean View - 340 sq ft
- Ocean Front - 340 sq ft
- Deluxe Ocean View - 419 sq ft
- Deluxe Ocean Front - 419 sq ft

**Actual room sizes vary and excludes sq ft of lanai*

Guest Services & Facilities

- 142-yard oceanfront swimming lagoon with lava-rock waterways, heated outdoor spa, children's pool and private poolside gazebos
- Legendary torch lighting and cliff diving ceremony nightly at sunset with complimentary entertainment
- The Spa at Black Rock, full service spa specializing in massages, skin treatments, manicures, pedicures and more
- The Link@Sheraton™ Lounge with six computers and Internet access
- Sheraton Adventure Club with daily cultural activities and water sports
- Fitness Center and three night-lit tennis courts
- Full service activities/concierge desk and poolside concierge



Resort/Partial Ocean/Ocean View



Ocean Front



Deluxe Ocean View



Deluxe Ocean Front

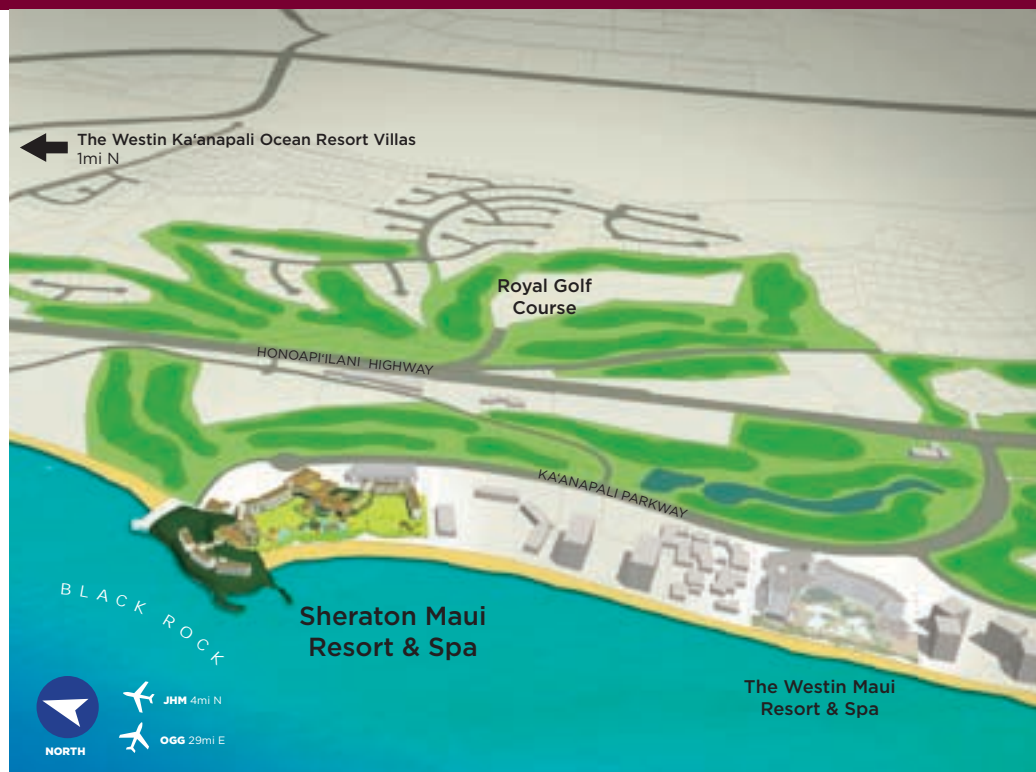
Map & Directions

From Kapalua Airport

Approximate drive time – 15 minutes
Take Highway 30 South for about 3 miles and turn right onto Kā'anapali Parkway. Go all the way to the end and Sheraton Maui Resort & Spa is on the left side.

From Kahului Airport

Approximate drive time – 50 minutes
Start out going south on Kuhea Street and turn right onto Eena Street. Take the right onto Kala Road and then left onto Haleakala Highway. Turn slight right onto Hana Highway HI-36 W and keep driving for about 2 miles. Turn left onto Dairy Road HI-380 S. Continue to follow HI-380 S for the next 6 miles. Turn left onto Honoapi'ilani Highway HI-30 S and keep driving for approximately 19 miles. Turn left onto Kā'anapali Parkway. Go all the way to the end and Sheraton Maui Resort & Spa is on the left side.



Restaurants and Bars

- Black Rock – start your day with breakfast or discover a selection of fresh seafood and grilled steaks for dinner in a casual open-air setting
- Teppan-yaki Dan – experience the exciting flair and exquisite flavor of traditional Japanese cuisine
- Mai Tai Bar – relax poolside and enjoy a delightful menu for lunch and refreshing drinks
- The Cliff Dive Bar – enjoy appetizers and tropical drinks throughout the day and witness our traditional torch lighting and cliff diving ceremony at sunset
- The Link@SheratonSM Lounge – end the day with cocktails and light appetizers
- Stay at One, Dine at All – from casual to fine dining, explore a variety of cuisines with Starwood Hotels & Resorts in Maui and enjoy the convenience of billing your meal back to your room no matter which hotel you choose

Daily Resort Charge*

\$25 plus tax includes:

- High-speed Internet access in guest room and at The Link@SheratonSM
- Wireless Internet access in the lobby and pool bars
- Local telephone calls
- Credit card and 800 access telephone calls up to 60 minutes
- Self-parking
- Valet parking on the day of arrival (first night only)
- Shuttle service to Lahaina Cannery Mall and Lahaina town
- Seasonal activities

*Cost and inclusions subject to change without notice

Transportation

- Kahului Airport (28 miles from Kā'anapali)
- Kapalua Airport (1.5 miles from Kā'anapali)
- Airport Shuttle, Speedishuttle 1-800-977-2605
- Limousine, Carey Hawaii Transportation 1-888-563-2888

Local Area

- Black Rock
- Lahaina-Pu'ukoli'i Sugar Cane Train
- Historic Lahaina Town

Golf

- Kā'anapali Golf Resort
- Kapalua

Shopping

- Whalers Village
- Lahaina Cannery Mall
- Lahaina Gateway Mall

Helpful Links

- gohawaii.com
- kaanapaligolfcourses.com
- seehawaiiive.com
- sheraton-maui.com/weddings

Meetings & Special Events

- Flexible indoor and outdoor space for wedding ceremonies, receptions and meetings
- 12,330 square-feet of indoor function space and 18,000 square-feet of outdoor space, including the exquisite Ocean Lawn with stunning views of the Pacific